

# Watheroo Dolomitic Lime

**Peter Manns 0428 922 340**

**Terri Manns 0418 922 340**

**www.dolomite.com.au**



**LIME WA**

Independently  
Audited  
Lime Suppliers



Tested by a  
Code of Practice  
Approved Laboratory



## PRODUCT INFORMATION SHEET

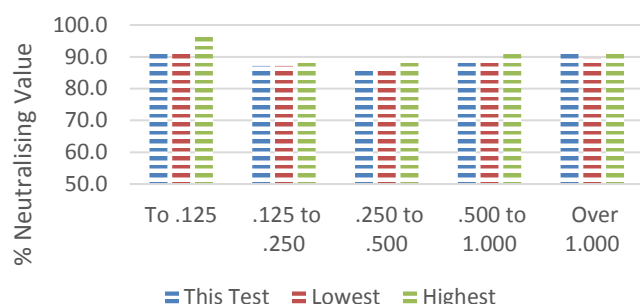
### GENERAL INFORMATION

<b>PIT NAME</b>	Watheroo Dolomitic Lime	<b>DATE</b>	April 9th 2018
<b>LOCATION</b>	Watheroo	<b>LIME WA REF.   LAB NO.</b>	A003 B1803-0071-01895
<b>DESCRIPTION</b>	Dolomitic Lime	<b>SCREENED   SCREEN SIZE</b>	Yes 2.0mm
<b>WEIGH SYSTEM</b>	Compuload Loader Scales [Accredited weigh system verified by Trade Measurement Services]		

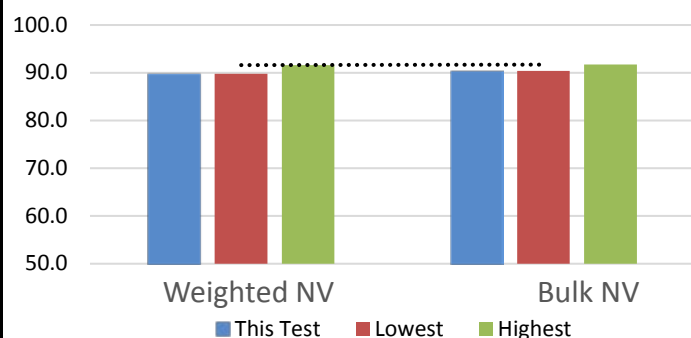
### CODE OF PRACTICE APPROVED LABORATORY REPORT

SIEVE RANGE (MM)	% WEIGHT			% NEUTRALISING VALUE	
	THIS TEST	3 YEAR PIT RANGE		THIS TEST	3 YEAR PIT RANGE
0.000 - 0.125	<b>21.0</b>	19.0 : 21.0		<b>91.3</b>	91.3 : 97.0
0.125 - 0.250	<b>11.4</b>	10.6 : 11.5		<b>87.1</b>	87.1 : 88.9
0.250 - 0.500	<b>14.1</b>	13.4 : 15.1		<b>86.7</b>	86.7 : 89.0
0.500 - 1.000	<b>17.4</b>	17.4 : 19.9		<b>89.0</b>	89.0 : 90.9
> 1.000	<b>36.1</b>	34.3 : 38.0		<b>91.4</b>	89.5 : 92.1
CALCIUM (Ca) (1M HCL)	<b>19.0</b>	19.0 : 19.5			
MAGNESIUM (Mg) (1M HCL)	<b>11.3</b>	10.7 : 11.3			
SODIUM (Na) (1M HCL)	<b>0.1</b>	0.1 : 0.2			
			<b>WEIGHTED AVE NV</b>	<b>89.8</b>	89.8 : 91.6
			<b>BULK NV</b>	<b>90.4</b>	90.4 : 91.7

**3 Year Comparison % NV by Sieve Range**



**3 Year Comparison Ave % NV**



**Department of  
Primary Industries and  
Regional Development**

*This product sample was collected by the Department of Primary Industries and Regional Development, and was submitted directly to an approved laboratory for testing as part of the Lime WA Inc. independent audit program.*

**DISCLAIMER & SUPPLIER STATEMENT** : The supplier states that the above analysis provided by a Lime WA Inc Agricultural Lime Industry Code of Practice approved laboratory is a true representation of the product being supplied from the nominated lime pit. Lime WA Inc requires members to provide the above details in accordance with the Code of Practice requirements but makes no claims and provides no guarantees on the quality or suitability of the product supplied. Product supplied by Lime WA Inc members occurs naturally and has a moisture retention capacity that varies according to seasonal conditions. As this cannot be controlled by suppliers, moisture level analyses are not included on this information sheet. Lime WA Inc is not responsible for any claims and/or liabilities arising from the supply and/or use of the product supplied. However, lime users are invited to contact the Association on 0419 575 737 in the event of any dissatisfaction with the product details provided by member suppliers.